

BETHESDA  
OUTREACH  
MINISTRIES

a ministry of  
Evangelical Baptist Missions  
ebm

*"The harvest is truly  
plenteous, but the  
labourers are few;  
Pray ye therefore the  
Lord of the harvest,  
that he will send  
forth labourers into  
his harvest."*

Matthew 9:37

Inside this issue:

Home for Christmas Results	2
Staff Spotlight: Elias & Mamitjie Matjeni	2
Prayer Request Update	2
Opportunities to Partner	3
Pouring Out and Running Over	3
From the Lips of Children	3
Opportunities	4
Calendar of Events	4

# Raised to Praise

February 2007 Newsletter

## The Harvest is Plentiful

NEEDS, needs and more needs!!! There are times that I feel overwhelmed with the needs that surround us each day. Children left helplessly alone to care for their siblings. Grannies who are looking for work to earn what little they can to put meager amounts of food on the table for her children's children.

At Bethesda we face the challenge of helping to meet the needs of orphan children. We encourage them daily to become disciples of Christ in the home and in school.

God has graciously given Bethesda the greatest staff in the world. We have 17 South Africans and 6 Americans. I often refer to our staff as my heroes who help to keep this ministry afloat. These team members work diligently by giving of themselves sacrificially through long hours and full weeks to see this ministry continue for God's glory. I praise God for this!

Nevertheless, **we need help urgently!** There are a few ministry positions at Bethesda that must be filled to bring some relief to our current staff! We need:

- **Business Manager**
- **Team and Guest Coordinator**
- **Maintenance Personnel**

These are the urgent positions, but there are also other roles

that need to be filled. If you are interested in serving the Lord as a missionary here at Bethesda, please contact me. I would love to talk to you and help you work through the process.

Praise the Lord for the year 2006 in which we were able to accomplish many of the goals that were set, and finish in the black. As is the case in any organization, many goals come with price tags attached to them. Please continue to pray that God will send the needed finances so that we can realize the goals that have been established for 2007.

We give thanks to God for *you*, our partners from all around the world, who help meet the needs of orphan children. Please continue to pray that we will rely on God's wisdom as we raise up generations of children who will boldly proclaim God's marvelous deeds!

*John*  
FOR THE  
BETHESDA TEAM

**Bethesda**  
OUTREACH  
Compassionate Care for African Orphans





## “Home For Christmas” Results



The staff and children of Bethesda would like to thank all of you who gave toward Bethesda’s “Home for Christmas” project throughout the past two months!

Through your sacrificial efforts, it looks as though we have raised a total of \$50,000 (R300,000) to-

date toward the construction of our next child care home.

The total cost to construct and outfit the home is \$220,000 (R1,320,000), and we praise God that He has put us well on our way to having the funds required to begin building.

Though our celebration of the Lord’s birth has already taken place, you are still welcome to give toward the children’s home construction if God leads your heart in such a way. Please designate all such gifts as “Children’s Home Construction.”

## Staff Spotlight

### Elias & Mamtjje Matjeni

Elias and Mamtjje were the first houseparent couple to begin at Bethesda in February of 2003. Elias has been a Pastor for 16 years, and he also works with the Department of Education in the area of facilitating libraries in the district. Mamtjje taught primary school for 19 years before becoming a full-time housemother with Bethesda.

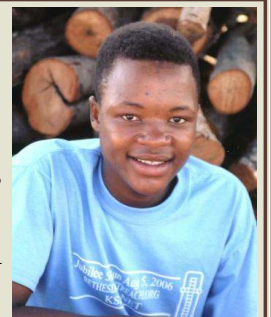


Mamtjje and Elias both came to know the Lord through the influence of Christian families and after personally coming to grips with the love of God as they grew into adulthood. They do a wonderful job parenting the six children that God brought into their home in 2003. Neo (12 years), Shane (10 years), Kgothatso (9 years), Masego (9 years), Konyana (5 years) and Busisiwe (4 years) are all benefiting from the love of parents who daily disciple them in the ways of Christ. What an exciting thing it has been to watch these children grow and mature since their first days at Bethesda!

Elias and Mamtjje share that the best parts of the ministry are the gradual establishment of parent/child relationships with the children, and also seeing the kids strive to follow God’s ways. The Matjeni’s ask you to pray that God would give them wisdom in balancing their time between children, spouse, church and ministry, daily routines, rest, and personal time with God.

## Prayer Request Update

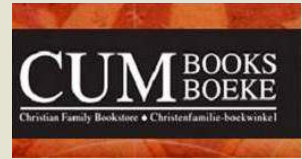
Please continue to be in prayer for Ayanda, our Child of the Month from December. He is scheduled to undergo a skin graft for injuries to his arm and shoulder that resulted from a taxi accident he was involved in just before Christmas. He is currently in hospital, awaiting surgery and undergoing physical therapy. Pray for quick restoration and recovery, an ease in catching up on his schoolwork, and that he will use this time to grow in his relationship with his Savior.



## Opportunities to Partner

### Buy at CUM Christian Bookstores

CUM Christian Bookstores, a national chain in South Africa, will be arranging for some of the profit from their Easter Sale stock to be going to Bethesda, to help with the costs of caring for the children. Just a reminder for those of you who live in South Africa, to continue to support CUM books and look forward to more details on how your purchases before Easter 2007 will benefit the children of Bethesda.



### Sponsor Riaan & Andrew in the Cape Epic

Local South African pastor Riaan Niemand and his friend Andrew Loggie will take on this daunting 900 kilometer mountain bike stage race from 24–31 March. We are so thankful for their efforts



as they push themselves to the limit in support of the orphans of Bethesda. All of their sponsorship proceeds are going to the ministry of Bethesda, and we encourage you to assist in sponsoring them by giving a donation designated in honor of “The Cape Epic.” For South African banking details or US online giving information, see page 4 of this update. To read more about the race, go [www.cape-epic.com](http://www.cape-epic.com).

## Pouring Out and Running Over

### World-Wide Blessings Appreciated in Work of Netherlands Church



Corrie Kaljouw probably didn't realize how many people God would bless through the donation program she began in the 1970's. Since then, the ladies of Nederland's Reformed Church in Holland have packed countless boxes of clothes to be sent to those in need. For over a year, Bethesda has been a grateful recipient of many lovely new clothes from these ladies—some of them beautifully hand-knitted. The houseparents have enjoyed going through the clothing with their children whenever they were in need, and the children have enjoyed being able to select brand-new outfits.

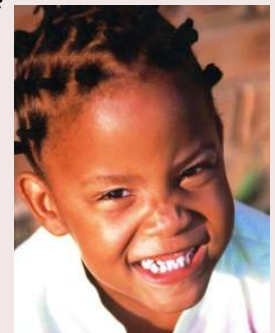
Recently the ladies at Nederland's Reformed made the decision to stop sending clothes because of the cost of shipping, and plan instead to support Bethesda's children with regular financial donations. We often encourage this alternative, and are thankful to those who choose it. We want to give an extra special thank-you to the congregation of Nederland's Reformed from the handsomely-clad children of Bethesda, who have so enjoyed your gifts!

### From the Lips of Children

Prayer overheard by housemother Lenah Phago while listening to her youngest daughter, 4-year-old Lethabo:

“Dear God, Please give me sweets to eat. Amen.”

☺☺☺



# BETHESDA OUTREACH MINISTRIES

Email: [bethesda-temba@boi.org](mailto:bethesda-temba@boi.org)

## South African Details:

Plot 13 Klipdrift  
PO Box 2643  
Hammanskraal  
0400

Phone: 012 711 0087

Fax: 012 711 3472

## Bank Details:

Standard Bank, Brooklyn

Branch Code: 011245

Account Name: Temba Bethesda

Outreach

Account Number: 011818743

## United States Details:

Evangelical Baptist Missions

Bethesda Outreach

PO Box 781438

Indianapolis, Indiana 46278

Phone: 317 872 4488

Fax: 317 872 4489

For U.S. online giving, go to

[www.ebm.org](http://www.ebm.org)

We're on the Web!

[www.bethesdaoutreach.org](http://www.bethesdaoutreach.org)

## Managerial Staff:

John & Lois Mixon

Klaas Mashabela

Michele Geurink

Ruth Rising

Frans Manaka

Dana Scott

## Houseparent Supervisor:

Fritz Shikwambane

## Houseparents:

Elias & Mamtjie Matjeni

Jones & Lenah Phago

Fritz & Masello Shikwambane

Moses & Francina Mmotlana

Frans & Salome Manaka

## Houseparent Assistant:

Christinah Moagi

## Maintenance/Grounds:

Albert Nkuna

Elvis Raphakgadi

Dorah Maluri

## Teachers:

Elizabeth Maboeba

Jacy Hobbs

Tryphina Ledwaba

## Compassionate Care for African Orphans

Bethesda Outreach, a ministry of Evangelical Baptist Missions, was born in October of 2000 out of a desire to show compassion to children in Africa who had been orphaned by AIDS.

Bethesda's mission is to encourage and assist the local church in meeting the needs of orphan children that they may become disciples of Christ. That mission is accomplished through Bethesda's Children's Village, Orphan Care Resource Centre, and Hands of Mercy Ministry.

Bethesda Outreach Ministries is registered as a non-profit organization.

For more information, please visit our website at [www.bethesdaoutreach.org](http://www.bethesdaoutreach.org).

## Opportunities

### Capital Project Needs

Children's Home

Construction:

R 1,320,000 (\$220,000)

Village Road Construction:

R 480,000 (\$80,000)

Combie (2 needed):

R 220,000 (\$36,670)/each

Tractor with Equipment:

R 120,000 (\$20,000)

### Children's Home Needs

(for donors living in South Africa)

Non-perishable food items



## Calendar of Events

### 13 February

Appreciation Luncheon for Admin Bldg contractors

### 14 February

Bethesda Teacher's Conference

### 21 March

Human Rights Day – office closed

### 23 March

Last Day of Term 1 for students at JCA

  
**Bethesda**  
OUTREACH  
Compassionate Care for African Orphans